

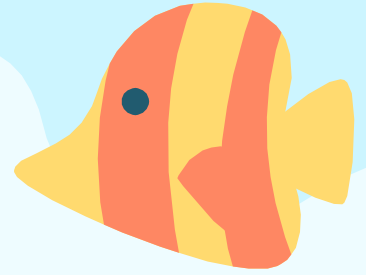
The background is a light blue gradient. On the left, there is a large, stylized teal coral branch. On the right, there is a large, stylized orange coral branch. In the bottom left corner, there is a smaller, stylized yellow coral branch. In the bottom right corner, there is a stylized teal sea slug or nudibranch. Several small, light blue circles of varying sizes are scattered throughout the background, representing bubbles. A single orange five-pointed starfish is located in the upper left quadrant.

# LIFE OF THE OCEAN'S PING PONG BALL

WHOA! Hello  
there! I am a  
pacific spiny  
lumpsucker!



# MY TRAVEL PLANS



My species can be found in many places:  
from Northern California to the Alaska and in the Chukchi Sea around Japan.

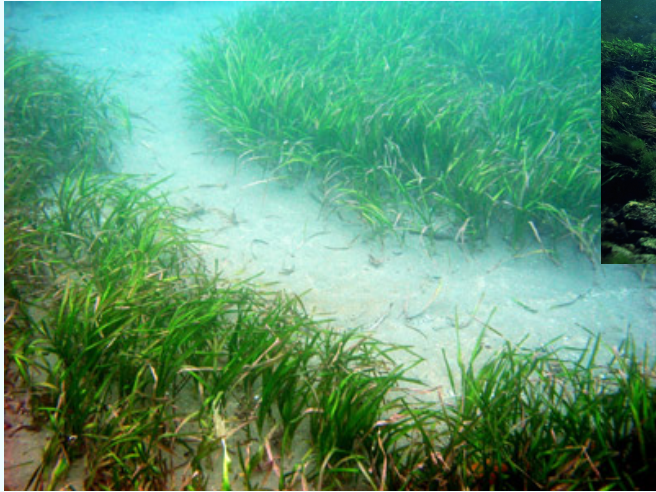
# MY BIRTH

- Birth months: July – October
- Mother's mission is completed after laying eggs (about 200!)
- Raised by a single father
- Born as a well-developed juvenile ready to munch!





# WHERE DO I LIVE?



Eelgrass beds



Rocky areas with kelp and algae

- Wide range of habitats with access to sturdy surfaces
- Often found in shallow bays and docking areas



# BODY IMAGE ISSUES

Awkwardly  
slow swimmer

I don't know if  
you can tell, but I  
am quite  
**unique...**

Fringed suction  
cup on the  
stomach

Tiny fins

No scales

Short length  
(usually 1-3  
inches)



Covered in plate-  
like structures  
with spiny lumps  
(tubercles)

# MY EVERYDAY MEALS

Small  
polychaete  
worms



Small mollusks



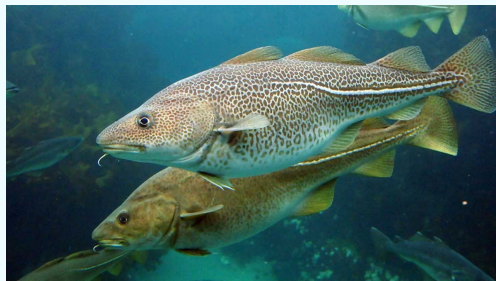
crustaceans



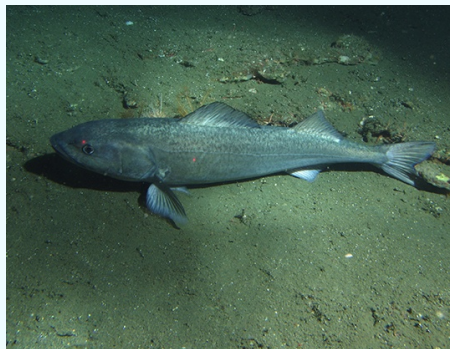
# THREATS

## Predators

Pacific cod



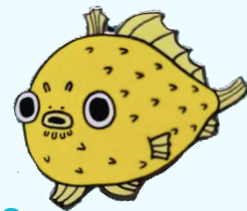
Sablefish



## Conservation Status

- ICUN Status “not evaluated”
- Impacted by habitat loss
- Might be vulnerable to sea level rise and increase in water temperature due to climate change
- Some evidence suggest that populations are declining due to commercial fisheries in Norway, Iceland and north Atlantic.

# DEAR HUMAN, I have a few words



## **Don't keep me as pets**

I know I am cute. But I naturally live in very cold water, which requires specialized equipment.

## **Look at my destroyed homes**

Human activities are greatly impacting where I live in.

## **Climate Change is impacting me**

Yes, climate change is real. I can confirm because I am going through it.



# How can you help?



- 1. Talk about me**
  - You know I just love attention!
- 2. Use your voice and political power**
  - You are all young and full of potential. The future is unpredictable.
- 3. Understand the impact of trawling**
  - Many of my kind are caught accidentally
- 4. Always use what you learned and spread awareness**
  - One person's power might not be significant, but together we can do anything!



THANK YOU!  
See you next time!

